

Northwest corner Section 14, Southwest corner Section 11, Township 12 North, Range 70 West

**CERTIFIED LAND CORNER RECORDATION**

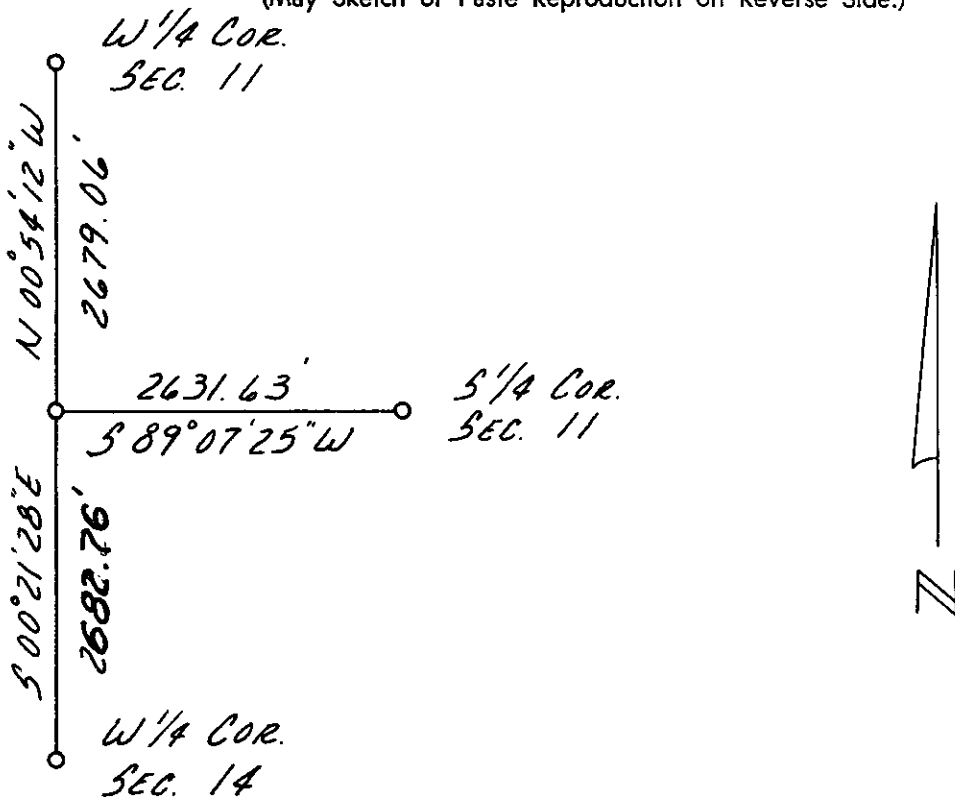
**DESCRIPTION OF CORNER EVIDENCE FOUND, AND ORIGINAL RECORD (If known)**

Original corner was a red sandstone 18" x 14" x 6" 10" deep marked with four notches on South and two notches on East side  
Found red sandstone at intersection of old North - South fence and old fence to the West 9" x 4" x 9" out of the ground

**DESCRIPTION OF MONUMENT AND ACCESSORIES ESTABLISHED TO PERPETUATE THE ORIGINAL LOCATION OF THIS CORNER:**

Corner to ties  
Northwest 2.40 to nail and flagging in corner brace post  
Northeast 2.10 feet to nail and flagging in corner post  
South 18.40 feet to steel fence post

**SKETCH, WITH COURSE AND DISTANCE TO ADJACENT CORNER IF DETERMINED IN THIS SURVEY. (May Sketch or Paste Reproduction on Reverse Side.)**



I, Neil M. Kruback certify that I have carefully performed or reviewed the work done on the diagrammed corner as reported on this recordation form and approve the same.

Neil M. Kruback  
Signature of Surveyor

692  
Registration No.

STATE OF WYOMING,  
Office of Clerk and Recorder,  
County of Taramie

This "corner record" was filed for record on the 18 day of December, 19 73, was noted on the cross-index plat and is assigned page No. \_\_\_\_\_, in book No. \_\_\_\_\_.

John B. Husman  
County Official

Cross Index No. <u>J-17</u>	T. <u>12 N</u>	R. <u>70W 6thP</u>	Mer.
_____	T. _____	R. _____	Mer.
_____	T. _____	R. _____	Mer.
_____	T. _____	R. _____	Mer.
_____	T. _____	R. _____	Mer.
_____	T. _____	R. _____	Mer.
_____	T. _____	R. _____	Mer.

Photographed ✓  
Indexed *FB*  
Posted ✓  
Assessor ✓

THE STATE OF CALIFORNIA }  
County of ... }  
THIS INSTRUMENT WAS FILED FOR RECORD  
at ... 11 27 91 ... M. on the  
... 18 ... of *December*  
A. D. 19 ... 7 3 ... recorded in  
Book ...

*John ...*

COUNTY CLERK & EXCHIEF REGISTRAR of Deeds  
BY *FB* Deputy